

CG Alu-terrain ground mounting system

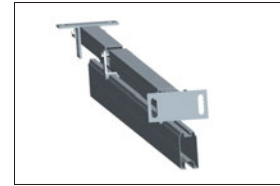
Optimal cost-performance ratio ground mount

- Highest pre-assembly supporting beam for easy and fast installation.
- Ground screws and concrete foundations optional.
- Flexibility with variable inclination and height.
- Ecological and low-maintenance for entire life span.

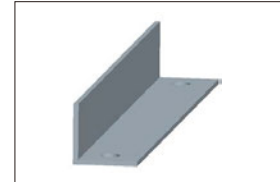


Features

Install site	Open terrain, landfill, and disposal
Elevation angle	Up to 60°
Wind speed	Up to 60m/s(216kmh/133mph)
Snow load	Up to 50cm
Standard	AS/NZ1170.2:2011, JIS C 8955:2011, other international standards
Distance between footings	Depending on load condition, refer to manual
Clearance	Up to request
PV module	Framed, unframed
Module orientation	Landscape, portrait
Size of module array	Any layout up to site condition
Foundation	Concrete base or ground screw
Material	Anodized aluminum 6005 T6, stainless steel 304, hot-dipped galvanized steel Q253B
Color	Natural, powder coated
Module widths	Maximum 1.0m
Module lengths	Maximum 2.0m
Warranty	10 years limited warranty, refer to warranty doc



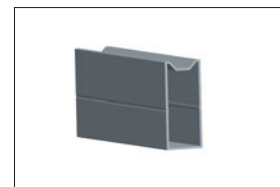
Pre-assembled beam



Reinforcement angle aluminum



Rail

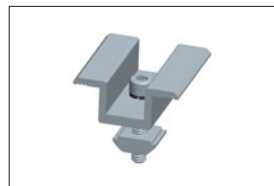


Rail connector

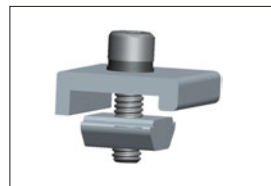
- All profiles are available in various lengths or can be cut to measure



End clamp



Inter clamp



Rail clamp



Ground screw optional



Open terrain



10
Years
Warranty



Framed module



Unframed module



Orientation landscape



Orientation portrait

